



Mekong River Commission

Weekly Dry Season Situation Report in the Lower Mekong River Basin 1-7 February 2022

Prepared by
The Regional Flood and Drought Management Centre
8 February 2022

The MRC is funded by contributions from its Member Countries and Development Partners, including Australia, Belgium, the European Union, Finland, France, Germany, Japan, Luxembourg, the Netherlands, Sweden, Switzerland, the United States and the World Bank.

Copyright © Mekong River Commission, 2020

First published (2020)

Some rights reserved

This work is the product of the Mekong River Commission Secretariat. While all efforts are made to present accurate information, the Secretariat does not guarantee the accuracy of the data included in this work. The boundaries, colours, denomination, and other information shown on any map in this work do not imply any judgement on the part of the MRC concerning the legal status of any territory or the endorsement or acceptance of such boundaries.

Nothing herein shall constitute or be considered to be a limitation upon or waiver of the privileges and immunities of the MRC, all of which are specifically reserved.

This publication may be reproduced in whole or in part and in any form for educational or non-profit purposes without special permission from the copyright holder, provided acknowledgement of the source is made and notification is sent to the MRC. The MRC would appreciate receiving a copy of any publication that uses this publication as a source. This publication cannot be used for sale or for any other commercial purpose whatsoever without permission in writing from the MRC.

Title: Weekly wet season situation report in the Lower Mekong River Basin for 1-7 February 2022.

ISSN: 1728-3248

Keywords: flood/drought/weather/Mekong/Tonle Sap

For bibliographic purposes, this volume may be cited as:

Mekong River Commission. (2020). *Weekly dry season situation report in the Lower Mekong River Basin for 1-7 February 2022*. Vientiane: MRC Secretariat.

Information on MRC publications and digital products can be found at
<http://www.mrcmekong.org/publications/>

All queries on rights and licenses should be addressed to:

Mekong River Commission

Documentation and Learning Centre

184 Fa Ngoum Road, Unit 18, Ban Sithane Neua, Sikhottabong District, Vientiane 01000, Lao PDR

Telephone: +856-21 263 263 | E-mail: mrcc@mrcmekong.org | www.mrcmekong.org

Contents

- Figures..... 2
- Table 3
- Key Messages 4
- 1 Introduction 6
- 2 General Weather Patterns 7
- 3 Water Levels in the Lower Mekong River 11
- 4 Flash Flood in the Lower Mekong Basin 18
- 5 Drought Monitoring in the Lower Mekong Basin..... 19**
- 6 Weather and Water Level Forecast and Flash Flood Information 22
 - 6.1 *Weather and rainfall forecast* 22
 - 6.2 *Water level forecast* 23
 - 6.3 *Flash Flood Information*..... 24
 - 6.4 *Drought forecast*..... 24
- 7 Summary and Possible Implications 27
 - 7.1 *Rainfall and its forecast*..... 27
 - 7.2 *Water level and its forecast*..... 27
 - 7.3 *Flash flood and its trends*..... 28
 - 7.4 *Drought condition and its forecast*..... 28

Figures

Figure 1: Summary of weather conditions over the LMB.	7
Figure 2: Outlook of wet and dry conditions over the Asian countries by ASMC.....	8
Figure 3: No tropical storm risk observed on 7 February 2022.	8
Figure 4: Weekly total rainfall at key stations in the LMB.....	9
Figure 5: Weekly rainfall distribution over the LMB.....	10
Figure 6: Key stations and model application for River Monitoring and Flood Forecasting.....	11
Figure 7. Water level at the Jinghong hydrological station during 15 Oct 2021 to 7 Feb 2022.....	12
Figure 8. Water levels at Chiang Saen in Thailand and Luang Prabang in Lao PDR.	13
Figure 9. Water levels Nong Khai and Paksane in Thailand and Lao PDR.	14
Figure 10: Water levels at Nakhon Phanom and Savannakhet of Thailand and Lao PDR. ...	14
Figure 11: Water levels at Stung Treng and Kratie on the Mekong River.	15
Figure 12: Seasonal change of inflows and outflows of Tonle Sap Lake.	16
Figure 13. The seasonal change in monthly flow volume of Tonle Sap Lake.....	17
Figure 14: Weekly standardised precipitation index from Jan 30 to Feb 5.....	19
Figure 15: Weekly Index of Soil Water Fraction from Jan 30 to Feb 5.	20
Figure 16: Weekly Combined Drought Index during Jan 30-Feb 5.	21
Figure 17: Accumulated rainfall forecast (24 hrs) of model GFS.	23
Figure 18. Daily average of monthly rainfall anomaly forecast from January to March 2022.	25

Table

Table 1. The monthly change in the flow volume of Tonle Sap Lake.	17
Table 2. Weekly River Monitoring Bulletin.	26

Key Messages

Key messages for this weekly report are presented below.

Rainfall and its forecast

- During 1-7 February 2022, rainfall was detected in the Mekong River Basin (MRB), varied from 1.00 mm to 19.00 mm.
- There will be some rain for the next 7 days over the Mekong region from 8 to 14 February 2022 due to low-pressure line dominating some parts in the LMB.

Water level and its forecast

- The MRC's observed water level at Jinghong showed a stable level during the weekly monitoring period from 1 to 7 Feb 2022 (recorded on 7:00 am) and stayed about 0.36 m lower than its two-year average (2020-2021) value. The outflow at Jinghong station was about 807.00 m³/s from 1 to 7 February 2022.
- Amid the sudden decreased outflow from Jinghong upstream, water level of monitoring station at Chiang Saen in Thailand increased about 0.03 m from 1 to 7 Feb 2022 and remained 0.14 m higher than its long-term average (LTA), considered normal. Water level at Lao PDR's Luang Prabang increased about 0.08 m compared with last week and stayed 0.02 m higher than its historical maximum value. WLS at the monitoring stations from Chiang Khan in Thailand to Vientiane of Lao PDR, however, significantly decreased, dropping about 0.50 m; which remained higher than their LTA value. Water levels from Nong Khai in Thailand to Paksane in Lao PDR decreased about 0.35 m and 0.49 m respectively and dropped close to their historical minimum level, considered critical. Also, WLS from Thailand's Nakhon Phanom to Lao PDR's Pakse decreased about 0.60 m and stayed lower than their LTA level. The current WL at Savannakhet in Lao PDR dropped close to its historical minimum level, which is still considered critical. Water levels from the stretches of the river from Stung Treng to Kompong Cham in Cambodia slightly decreased, while WL at Chaktomuk, Koh Khel, Prek Kdam increased about 0.20 m due to some contributed rainfall from the upstream part (The Tonle Sap Lake area).
- The water volume of the Tonle Sap Lake up to 7 Feb 2022 was lower than its LTA but higher than the levels in 2019, 2020 and 2021 during the report period, and still considered critical.
- Water levels at Tan Chau and Chau Doc remained fluctuating between their Minimum and Maximum values due to the tidal process.
- Over the next seven days, the water levels across the monitoring stations are expected to go down from Khong Chiam in Thailand to Kompong Cham in Cambodia. Water levels at some stations currently remain higher than their long-term average value, while the others remain lower.

Drought condition and its forecast

- Drought conditions of the LMB from 30 January to 05 February 2022 were normal all over the LMB except some moderate drought in the northeast and southern parts due to severely dry soil moistures during the beginning of dry season. The region showed

no significant threat except some moderate and severe dry soil moistures which are normal during dry season.

- . For the upcoming three-month forecast, the LMB is likely to receive average rainfall and under normal conditions in February and March while receive relatively high amount of rain in April 2022. Based on the rainfall forecasts, April is likely to be much wetter than normal year especially in the north and central parts of the LMB.

1 Introduction

This Weekly Dry Season Situation Report presents a preliminary analysis of the weekly hydrological situation in the Lower Mekong River Basin (LMB) for **1-7 February 2022**. The trend and outlook for water levels are also presented.

This analysis is based on the daily hydro-meteorological data provided by the Mekong River Commission (MRC) Member Countries – Cambodia, Lao PDR, Thailand, and Viet Nam – and on satellite data. Water level indicated in this report refers to an above zero gauge of each station.

The report covers the following topics that are updated weekly:

- General weather patterns, including rainfall patterns over the LMB
- Water levels in the LMB, including in the Tonle Sap
- Flash flood and drought situation in the LMB
- Weather, water level and flash flood forecast, and
- Possible implications.

Mekong River water levels are updated daily and can be accessed from:
http://ffw.mrcmekong.org/bulletin_wet.php.

Drought monitoring and forecasting information is available at:
<http://droughtforecast.mrcmekong.org>

Flash flood information is accessible at: <http://ffw.mrcmekong.org/ffg.php>

2 General Weather Patterns

The weather outlook bulletins for three months (January, February and March) and the weather maps issued by the Thai Meteorological Department (TMD) were used to verify weather conditions in the LMB.

Since the end of January 2022, the warm weather has come because the influentially high-pressure air mass areas prevail over the LMB with gradually decreasing water levels in both mainstream and tributaries. The data from the TMD predict that low pressure of air-mass will bring warm weather condition in the upper part of Thailand, Lao PDR and Viet Nam. From February to April, it is the transitional period between the winter and the summer, when the high-pressure air mass areas prevailing over Thailand is weakened over the Mekong region.

[Figure 1](#) presents the weather map of 7 February 2022, showing a line of low pressure of the Monsoon Trough crossing the upper Mekong area in the northern part of Thailand, Lao PDR and some parts of Cambodia and Viet Nam, which could attract some rain for the next few days over those areas.

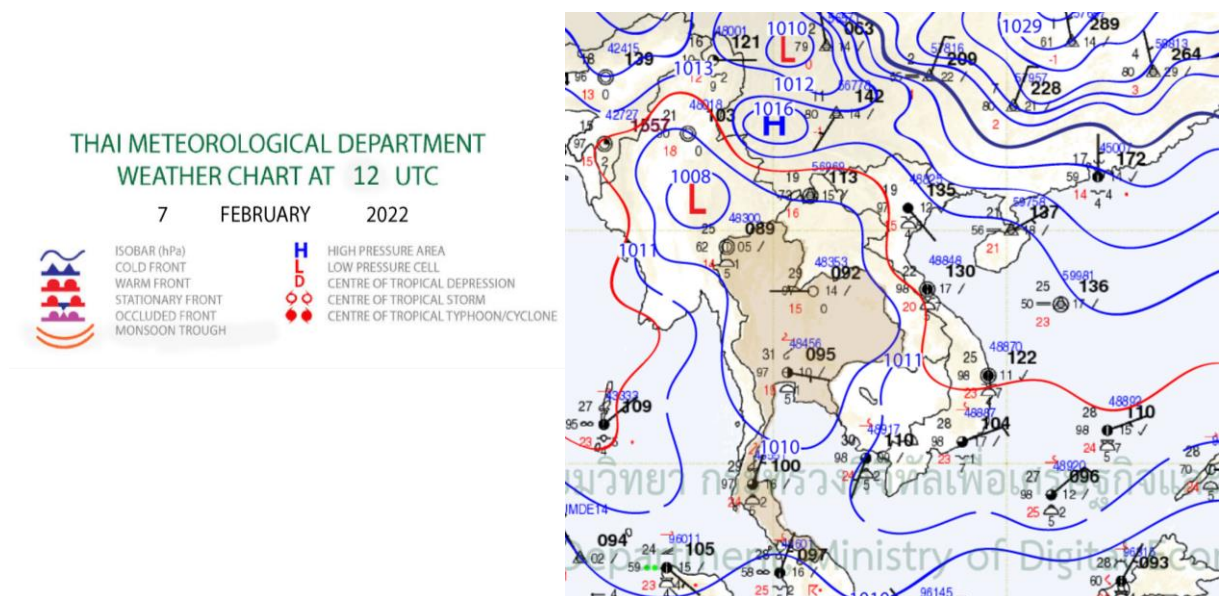


Figure 1: Summary of weather conditions over the LMB.

According to the ASEAN Specialised Meteorological Centre (ASMC), the highest probability of warm conditions is predicted over the lower part of the Mekong region covering Lao PDR and Thailand from 7- 20 February 2022, during the 1st and 3rd weeks of February. Moreover, the Mekong region is likely dominated by dry condition, which may bring warmer temperature in general to the lower part of the LMB. **Figure 2** shows the outlook of weather condition from 7 to 20 February 2022 in Southeast Asia based on results from the NCEP model (National Centres for Environmental Prediction).

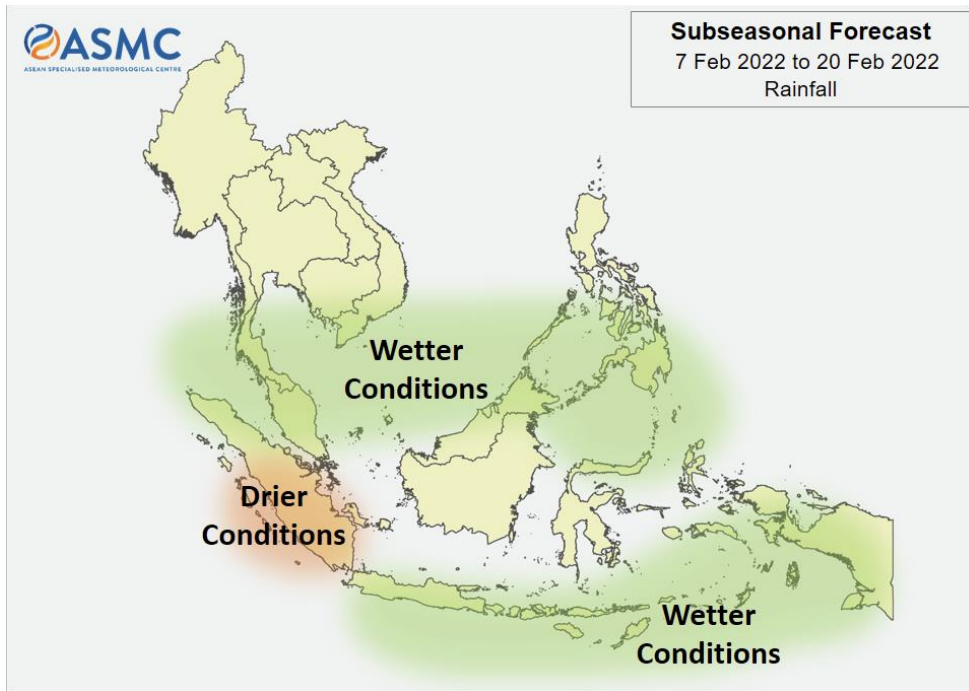


Figure 2: Outlook of wet and dry conditions over the Asian countries by ASMC.

Tropical depressions (TD), tropical storms (TS) and typhoons (TY)

There was no tracking storm covering the LMB during 1-7 February 2022, meaning no movement of storm detected from the South Sea of Viet Nam, as displayed in [Figure 3](#).

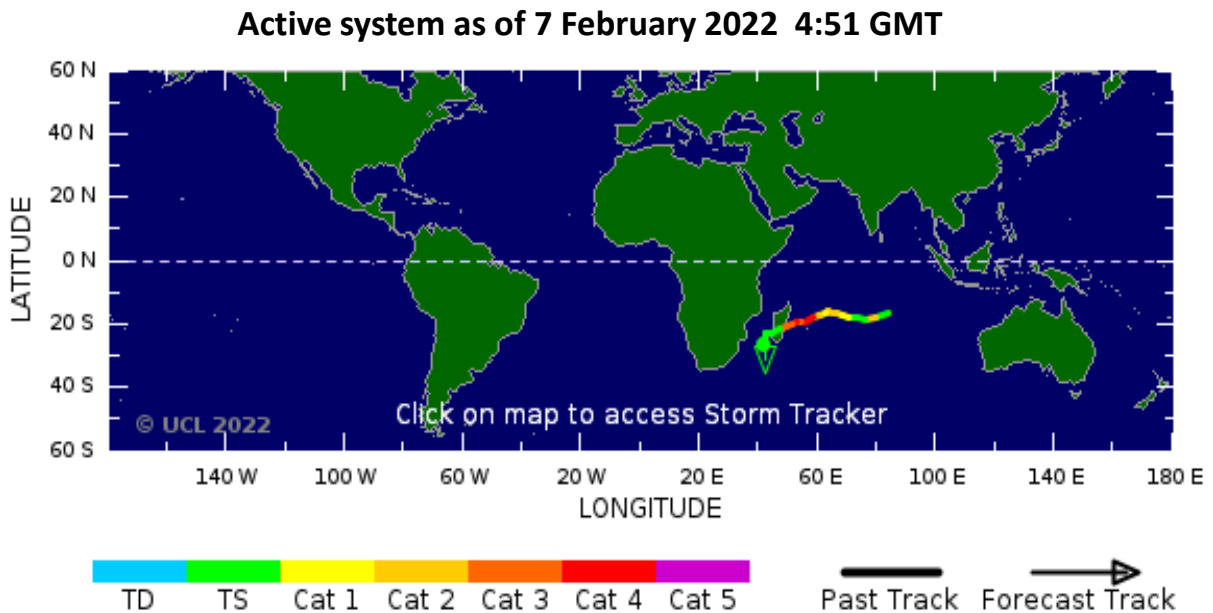


Figure 3: No tropical storm risk observed on 7 February 2022.

Rainfall patterns over the LMB

This week, rainfall was observed over the Lower Mekong Basin (LMB), from Chaing Sean to Mukdahan in Thailand and at Stung Treng to Neak Luong in Cambodia, varying from 1.00 mm to 19.00 mm. The rainfall from 1 to 7 February, compared with last week rainfall, is shown in [Figure 4](#).

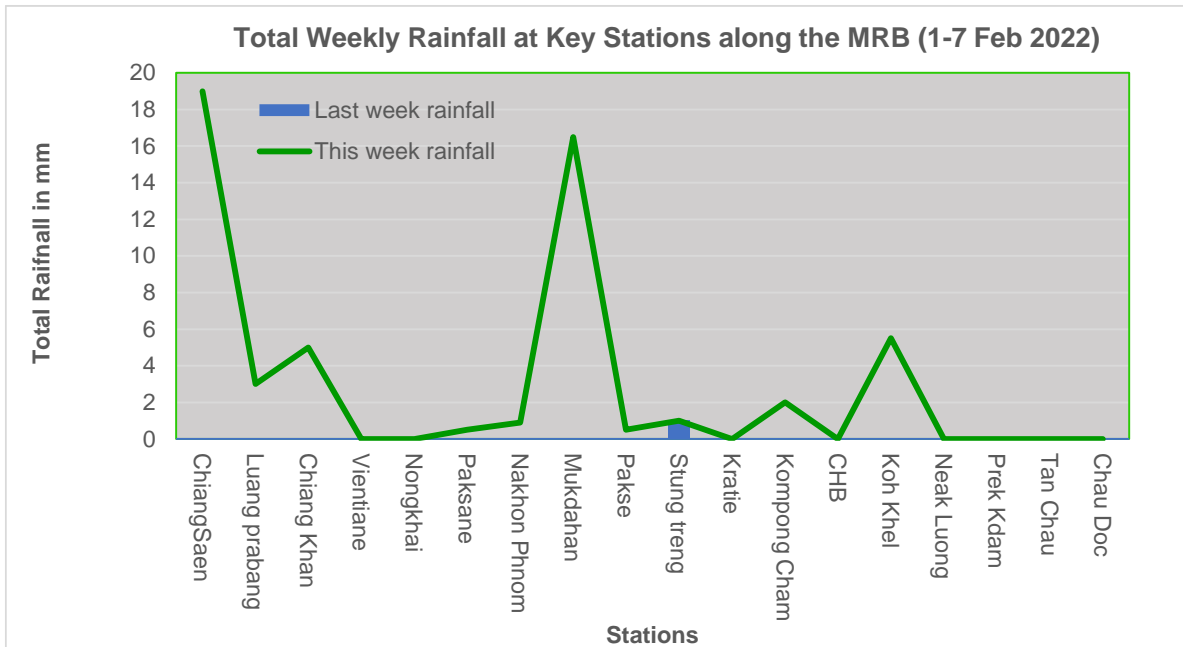


Figure 4: Weekly total rainfall at key stations in the LMB.

To verify area rainfall distribution, [Figure 5](#) shows a map of the weekly accumulated rainfall based on the observed data provided by the MRC Member Countries – Cambodia, Lao PDR, Thailand, and Viet Nam – from 1 to 7 February 2022.

Small amount of rain this week is an indication of the end of the rainy season in the LMB.

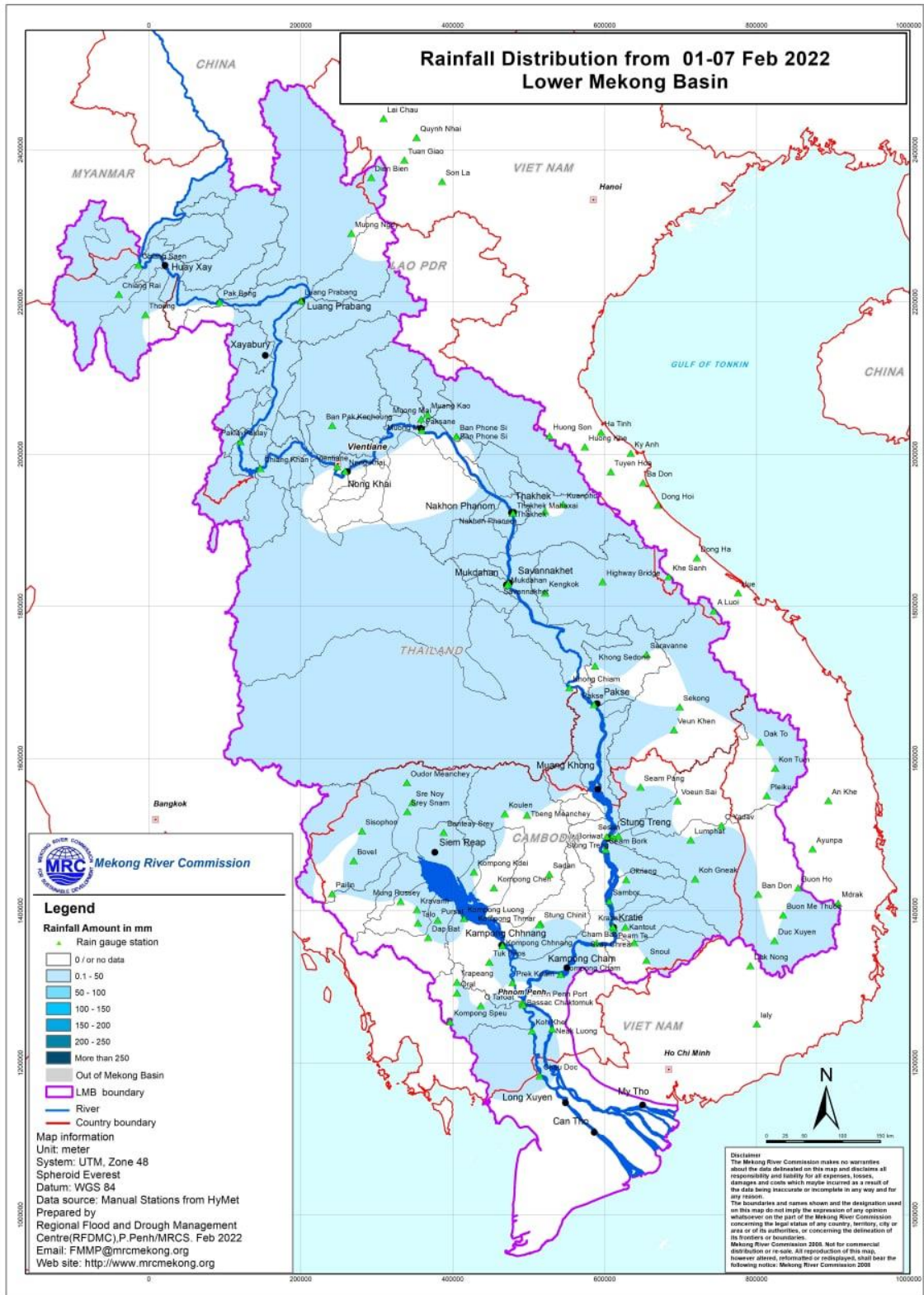


Figure 5: Weekly rainfall distribution over the LMB.

3 Water Levels in the Lower Mekong River

The hydrological regimes of the Mekong mainstream are illustrated by recorded water levels and flows at key mainstream stations: at Chiang Saen to capture mainstream flows entering from the Upper Mekong Basin (UMB); at Vientiane to present flows generated by climate conditions in the upper part of the LMB; at Pakse to investigate flows influenced by inflows from the larger Mekong tributaries; at Kratie in Cambodia to capture overall flows of the Mekong Basin; and at Viet Nam’s Tan Chau and Chau Doc to monitor flows to the Delta.

The key stations along the LMB and their respective model application for River Flood Forecasting during the wet season from June to October and River Monitoring during the dry season from November to May are presented in [Figure 6](#). The hydrograph for each key station is available from the MRC’s River Flood Forecasting: <http://ffw.mrcmekong.org/overview.php>. The weekly water levels and rainfall at each key station are summarised in **Annex A**.

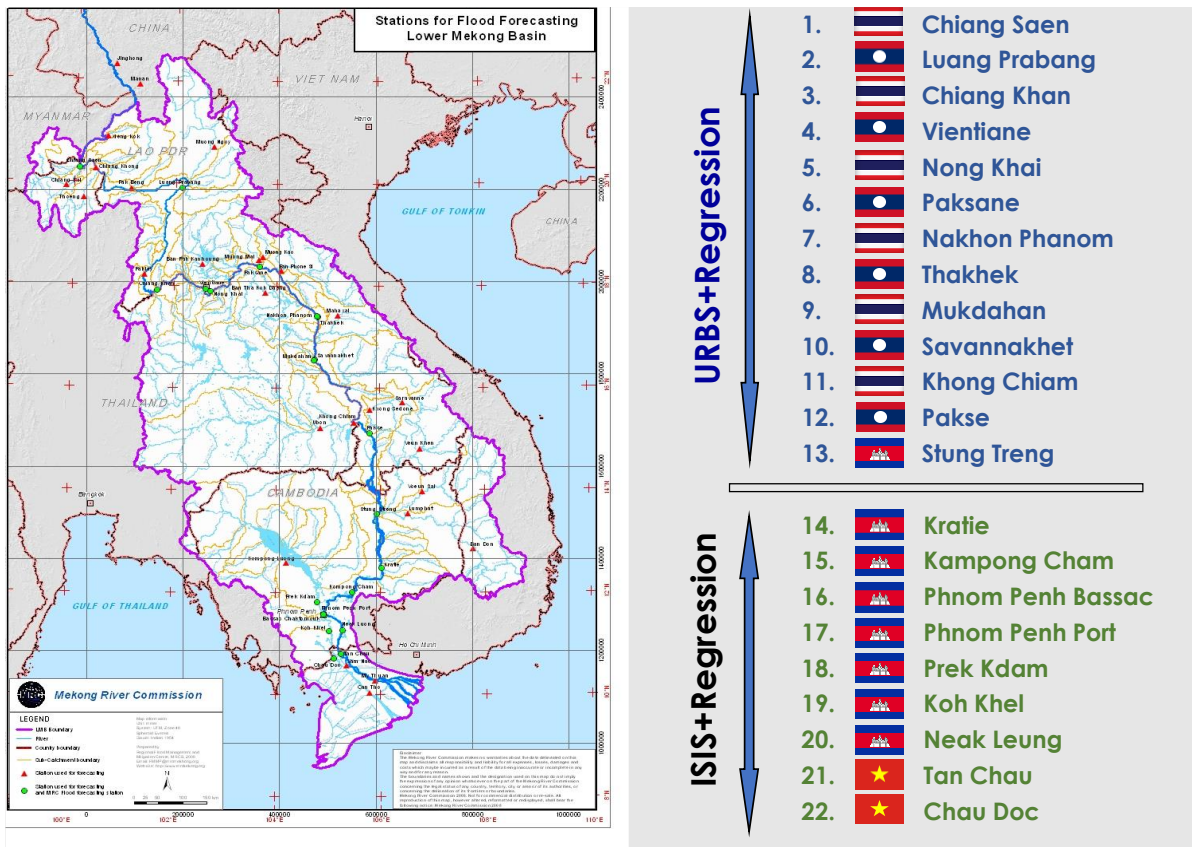


Figure 6: Key stations and model application for River Monitoring and Flood Forecasting.

The MRC’s observed water level at Jinghong showed a stable level during the weekly monitoring period from 1 to 7 Feb 2022 (recorded on 7:00 am) and stayed about 0.36 m lower than its two-year average (2020-2021) value. The Eyes on Earth (Mekong Dam Monitor) Natural Flow Model indicates that 39% of water is missing at the gauge in Chiang Saen, Thailand and just under 48% of water is missing at Vientiane, Lao PDR. Flow restriction from dams over the course of the last month was the main driver of missing water throughout the mainstream. Three parts of the Mekong are extremely wet for this time of the year; the headwaters in Tibet, the 3S Basin and western Cambodia. The outflow at Jinghong station was about 807.00 m³/s from 1 to 7 February 2022.

[Figure 7](#) below presents water level that increased at the Jinghong hydrological station¹, indicating the trend of fluctuating water level up to 7 February 2021.

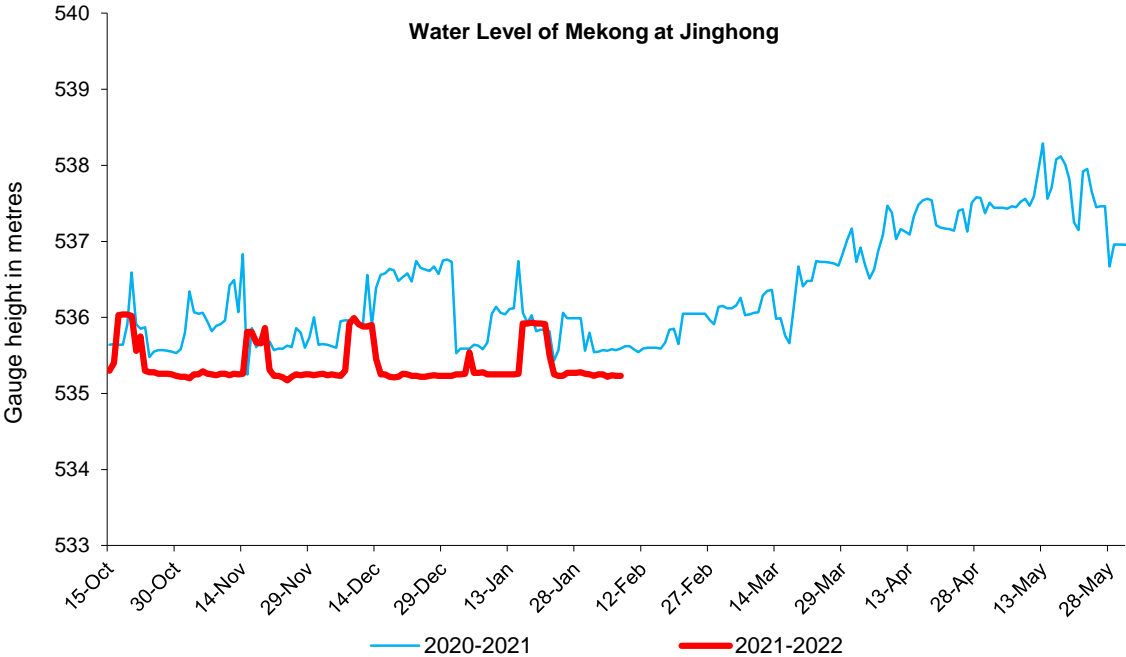


Figure 7. Water level at the Jinghong hydrological station during 15 Oct 2021 to 7 Feb 2022.

Amid the sudden decreased outflow from Jinghong upstream, water level of monitoring station at Chiang Saen in Thailand increased about 0.03 m from 1 to 7 Feb 2022 and remained 0.14 m higher than its long-term average (LTA), considered normal. Water level at Lao PDR’s Luang Prabang increased about 0.08 m compared with last week and stayed 0.02 m higher than its historical maximum value. Wls at the monitoring stations from Chiang Khan in Thailand to Vientiane of Lao PDR significantly decreased, dropping about 0.50 m, which remained higher than their LTA value. Water levels from Nong Khai in Thailand to Paksane in Lao PDR decreased about 0.35 m and 0.49 m respectively and dropped down close to their historical minimum level, considered critical. Also, Wls from Thailand’s Nakhon Phanom to Lao PDR’s Pakse decreased about 0.60 m and stayed lower than their LTA level. The current WL at Savannakhet in Lao PDR dropped close to its historical minimum level, which was still considered critical. Water levels from the stretches of the river from Stung Treng to Kompong

¹ Near-real time data of hydro-meteorological monitoring at the Jinghong hydrological station is available at <https://portal.mrcmekong.org/monitoring/river-monitoring-telemetry>.

Cham in Cambodia slightly decreased, while WL at Chaktomuk, Koh Khel, Prek Kdam increased about 0.20 m due to some contributed rainfall from the upstream part (The Tonle Sap Lake area).

Based on hydrological phenomenon, the contribution of inflow water from the upstream of Lancang-Mekong in China to the Mekong mainstream is about 16% in total during the wet season from June to October and about 25% in total during the dry season from November to May. The whole inflow of water into the LMB is influenced by rainfall at the Mekong mainstream and its tributaries during the wet season.

Chiang Saen and Luang Prabang

Water level during Feb 1-7 at Thailand’s Chiang Saen increased from 1.73 m to 1.76 m and stayed about 0.14 m higher than its Long-Term-Average (LTA), which was considered normal. When compared to last week, this week’s water level is relatively lower.

Water level at the Luang Prabang station in Lao PDR was up about 0.08 m, during the reporting period. Compared to last week, the figure shows that WL this week is higher. The water level at this station was 0.02 m higher than its Maximum Value. The water levels at Chiang Saen and Luang Prabang are shown in [Figure 8](#) below.

Being situated between the upstream (Nam Beng, Nam Ou, Nam Suong, and Nam Khan) and downstream (Xayaburi) hydropower dams, the Luang Prabang station has a unique characteristic as it is influenced by the operations of all its surrounding dams. **Thus, the water level at this station can possibly change very rapidly during the early dry season.**

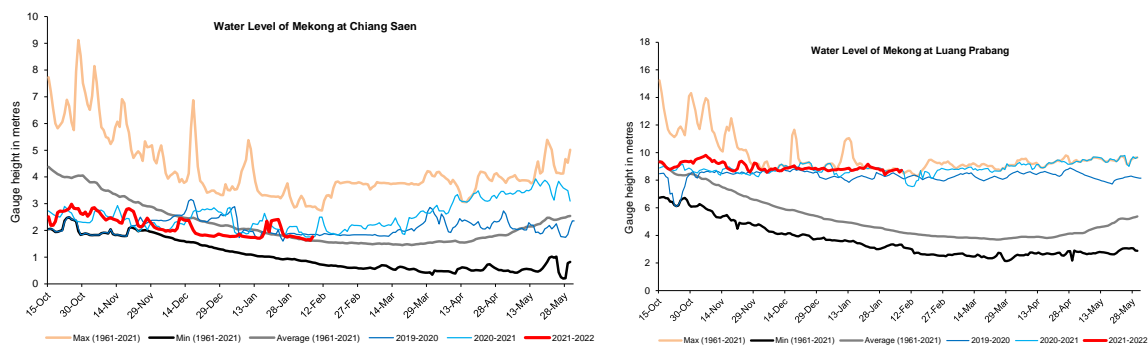


Figure 8. Water levels at Chiang Saen in Thailand and Luang Prabang in Lao PDR.

Chiang Khan, Vientiane-Nong Khai and Paksane

The water level at Chiang Khan in Thailand (downstream of the Xayaburi dam) decreased about 0.04 m during the reporting week. It remained 0.01 m higher than its LTA. Moreover, water level downstream at Vientiane in Lao PDR also decreased from 2.04 m to 1.73 m and was about 0.51 m higher than its LTA level during Feb 1-7. At Nong Khai station in Thailand, the water level was also down during the reporting period. It decreased from 1.38 m to 1.03 m showing 0.70 m lower than its LTA value, **which was still considered critical**. At Paksane in Lao PDR, water levels decreased about 0.49 m from 2.35 m to 1.86 m. **The current water level**

at Paksane in Lao PDR is about 0.83 m lower than its LTA level, which is close to its minimum level and still considered critical. The recently increased water levels from Chiang Khan to Nong Khai were obvious due to hydropower operation and water released from upstream. The water levels at Vientiane and Paksane are shown in [Figure 9](#) below.

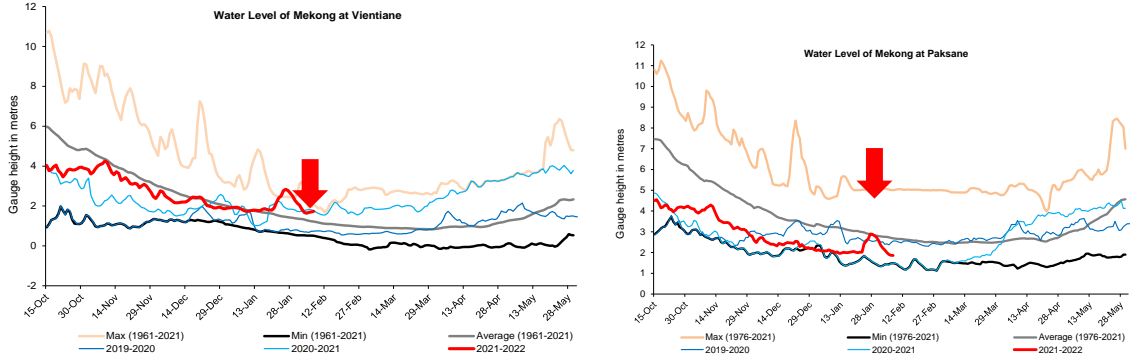


Figure 9. Water levels Nong Khai and Paksane in Thailand and Lao PDR.

Nakhon Phanom to Pakse

Water levels from Nakhon Phanom in Thailand to Pakse in Lao PDR significantly decreased between 0.25 m and 0.60 m, during the reporting period. **Water levels at these stations were staying below their LTA level.** The current WL at Savannakhet in Lao PDR is **close to its historical minimum level, which considered critical.** [Figure 10](#) shows the water levels at Nakhon Phanom and Savannakhet stations.

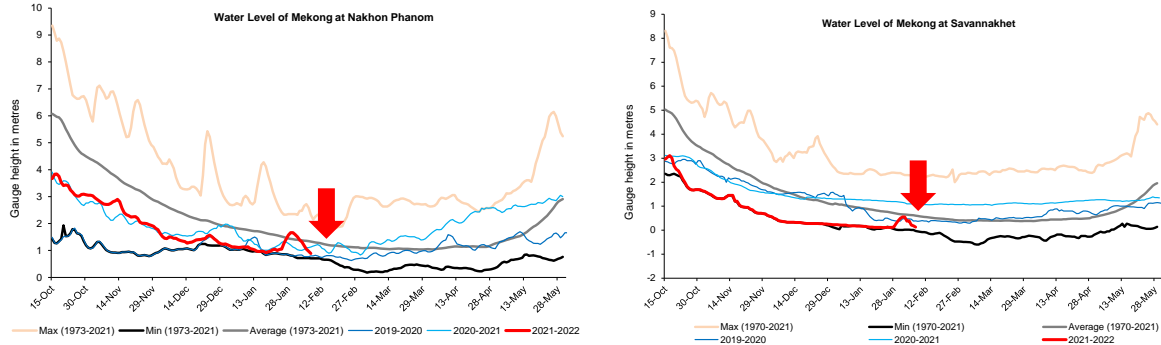


Figure 10: Water levels at Nakhon Phanom and Savannakhet of Thailand and Lao PDR.

Stung Treng to Kompong Cham/Phnom Penh to Koh Khel/Neak Luong

With less contributed inflow from the upstream part of the Mekong River and the 3S river (Sekong, Se San, and Sre Pok), the water levels from Stung Treng to Kratie in Cambodia were decreasing during 1-7 February 2022. This week water level from Stung Treng to Kratie decreased about 0.08 m and 0.01 m, respectively. The current water levels at Stung Treng and Kratie are staying about 0.32 m and 0.62 m higher than their LTA value, respectively. Water level at Kompong Cham was about 0.24 m below their LTA.

This week, the water levels at Stung Treng and Kratie were higher than their LTA, which considered normal (as showed in [Figure 11](#)).

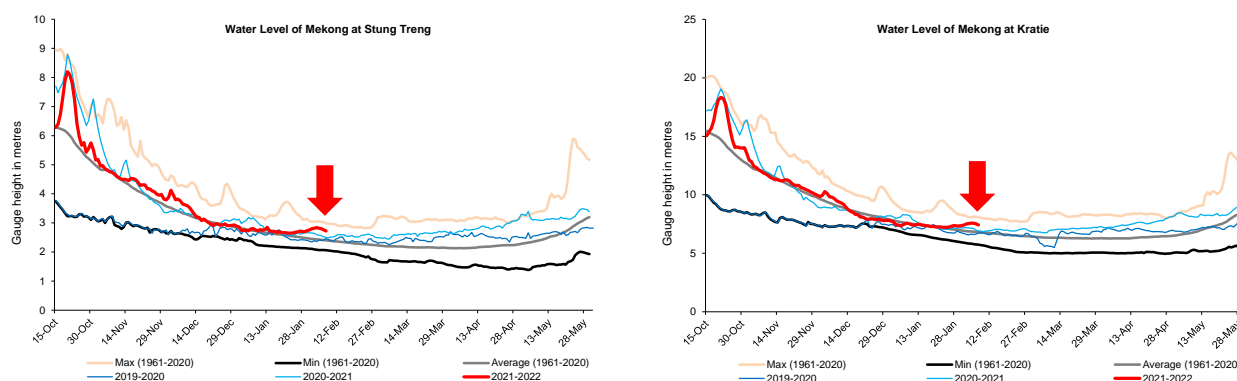


Figure 11: Water levels at Stung Treng and Kratie on the Mekong River.

At Chaktomuk on the Bassac River, due to some contributed flows from upstream catchment, the water level was up by about 0.14 m and stayed 0.31 m lower than its LTA value; while at Koh Khel, water level increased about 0.30 m, staying 0.04 m lower than its LTA value. The water level at Prek Kdam on the Tonle Sap Lake increased about 0.13 m and was about 0.26 m lower than its LTA value. The water level at the Tonle Sap Lake (observed at Kompong Luong) was similar to Prek Kdam station's water level. The recently increased water level was due to some rainfall and inflow contributed from upstream of the Tonle Sap Lake area during the reporting period. The water level at the Tonle Sap Lake (observed at Kompong Luong) followed the same trend of Prek Kdam station's water level. **Water levels at these stations were staying below their LTA level, which still considered critical.**

Tidal stations at Tan Chau and Chau Doc

This week, the water levels from 1 to 7 February 2022 at Viet Nam's Tan Chau and Chau Doc were fluctuating in between their Minimum and Maximum values due to daily tidal effects from the sea. The fluctuation was between 0.43 m and 1.72 m. The current water levels at **Tan Chau and Chau Doc were close to their minimum level, which considered critical.**

The Tonle Sap Flow

At the end of the wet season, when water levels along the Mekong River subside, the outflows of the Tonle Sap Lake return into the Mekong River and then to the Delta. This phenomenon normally takes place from end of September to October. Based on flow observation at Prek Kdam, the outflow of the Tonle Sap Lake was taking place since 10 October 2021.

[Figure 12](#) shows the seasonal changes of the inflow/reverse flow and the outflow of the TSL at Prek Kdam in comparison with the flows of 2019 and 2020, and their LTA level (1997-2020). Up to February 7 of this reporting period, **it was observed that the main outflow to Tonle Sap Lake decreased due to less rainfall and inflows from upstream.** This decreased outflow of Tonle Sap Lake was most likely caused by less inflows and no rainfall from the catchment area. Up to present, the outflow from the Tonle Sap Lake condition in 2022 is higher than

2019, 2020 and 2021 outflow conditions. However, the outflow of 2022 is still lower than its LTA (1997-2020). For next week, no rainfall is forecasted for the Tonle Sap area; thus, the outflow into the Tonle Sap Lake is likely continuing to decrease from the current level.

[Figure 13](#) shows seasonal changes in monthly flow volumes up to 7 February 2022 for the Lake compared with the volumes in 2019, 2020, 2021 and their LTA, and the fluctuation levels (1997–2021). It shows that up to February 7, **the water volume of the Tonle Sap Lake was lower than its LTA but higher than 2019, 2020, 2021 during the same period**. The figure is displayed in [Table 1](#), which indicates that the Tonle Sap Lake has been affected by water levels from the Mekong River, the tributaries, and rainfall in the surrounding sub-catchments and ***considered critical***.

This demonstrates the influence of the relationships between the reverse flows, water levels of the Mekong River, inflows from tributaries, and the flow direction in the complex hydraulic environment of the Tonle Sap Lake during the wet and dry seasons. The data show that about half of the annual inflow volume into the Tonle Sap Lake has originated from the Mekong mainstream. Thus, flow alterations in the mainstream could have direct impact on the Tonle Sap Lake water levels and on its hydrology.

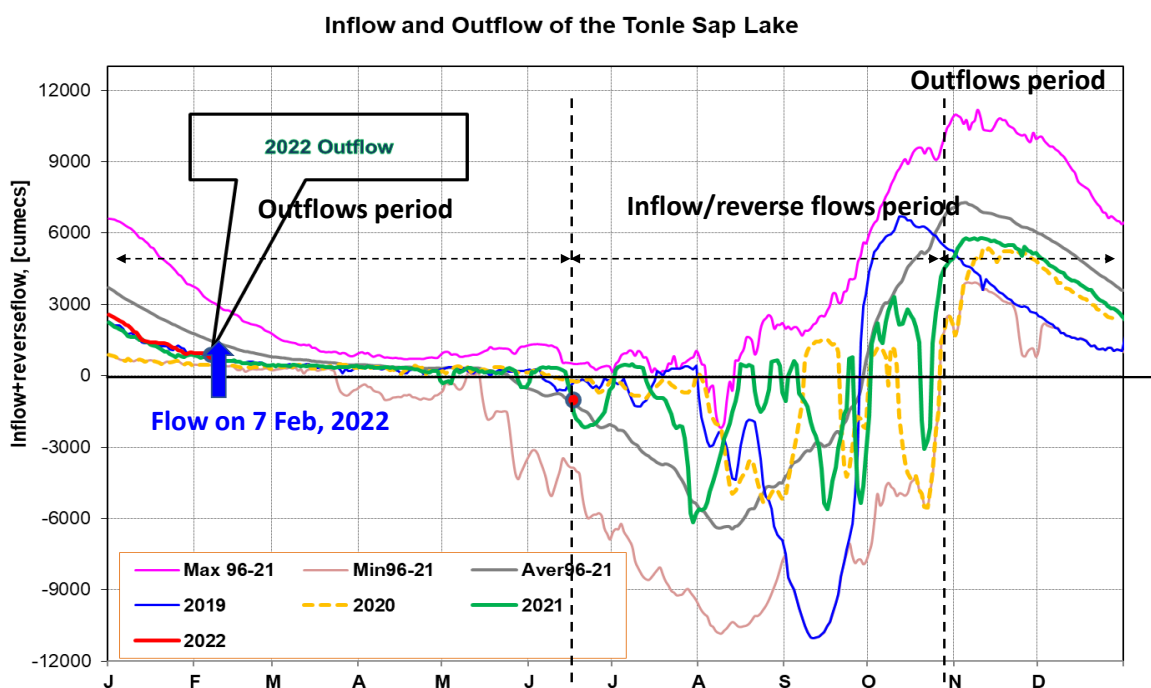


Figure 12: Seasonal change of inflows and outflows of Tonle Sap Lake.

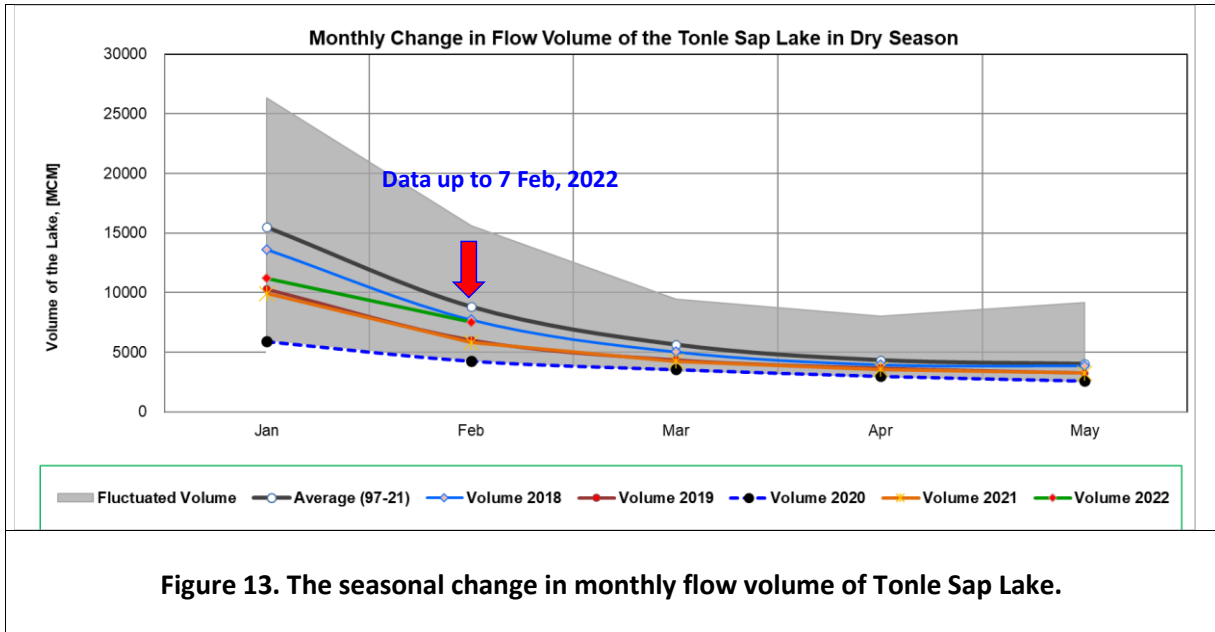


Figure 13. The seasonal change in monthly flow volume of Tonle Sap Lake.

Table 1. The monthly change in the flow volume of Tonle Sap Lake.

Month	Average Volume (97-21) [MCM]	Max Volume [MCM]	Min Volume [MCM]	Volume 2018 [MCM]	Volume 2019 [MCM]	Volume 2020 [MCM]	Volume 2021 [MCM]	Volume 2022 [MCM]
Jan	15523.23	26357.53	5906.80	13633.41	10285.31	5906.80	9923.80	11214.32
Feb	8837.89	15596.22	4198.60	7729.72	6019.30	4264.19	5832.97	7527.09
Mar	5654.18	9438.24	3347.07	5037.06	4354.62	3553.99	4264.88	
Apr	4346.65	8009.14	2866.91	3956.47	3667.47	2992.61	3556.68	
May	4030.23	9176.93	2417.81	3864.00	3266.43	2594.92	3240.78	
Jun	5708.30	13635.01	2468.70	5919.18	3517.06	2641.88	3798.29	
Jul	11493.25	28599.56	2925.86	12024.96	4001.99	2925.86	5346.73	
Aug	24666.69	39015.12	4433.46	22399.65	7622.71	5941.07	10547.80	
Sep	39634.03	65632.35	12105.31	53639.54	24194.19	12105.31	16382.34	
Oct	46873.44	73757.23	19705.50	48193.08	30358.38	20799.13	27318.21	
Nov	37823.16	60367.33	18534.61	31036.07	19112.65	27546.80	28982.93	
Dec	25126.11	38888.95	10563.49	18469.21	10577.29	18251.65	20170.76	
	Critical situation, compared with historical Min values							
	Normal condition, compared with LTA (Long term average)							
	Low volume situation, compared with LTA values							
Unit: Million Cubic Meter (1 MCM= 0.001 Km ³)								

4 Flash Flood in the Lower Mekong Basin

During February 1-7, the LMB was affected by three main weather factors. These include (i) The high-pressure area covered upper part during the week; (ii) the westerly wind at high altitude prevailed over the northern and upper north-eastern parts during the first half of the week; and (iii) the weak northeast monsoon prevailed over the Gulf of Thailand.

These conditions caused cool weather for almost the entire areas of the upper part with cold weather in some areas particularly in the northern part during the beginning and the middle of the week.

According to the MRC-Flash Flood Guidance System (MRC-FFGS) and analysis, flash flood events were not detected during the reporting period over the LMB.

5 Drought Monitoring in the Lower Mekong Basin

Weekly drought monitoring from 30 January to 05 February 2022

Drought monitoring data for 2022 are available from Sunday to Saturday every week; thus, the reporting period is normally delayed by two days compared to Flood and Flash Flood reports. We adopt the Index of Soil Water Fraction (ISWF) data obtained from FFGS to represent soil moisture of agricultural indicator for both dry and wet seasons.

- **Weekly Standardised Precipitation Index (SPI1)**

Meteorological drought condition of the LMB from January 30 to February 5, as shown in [Figure 11](#), was normal in most parts of the region. Weekly SPI map shows that the LMB received average rainfall in most parts of the region.

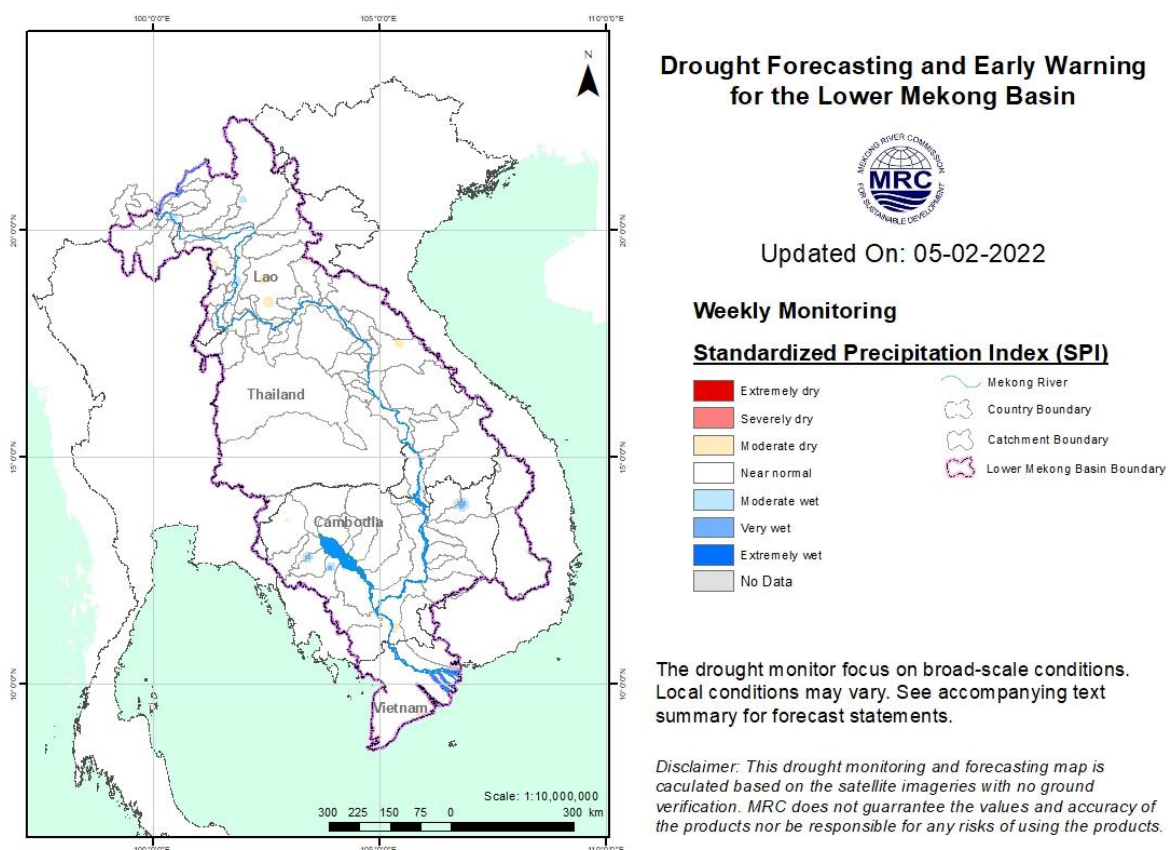


Figure 14: Weekly standardised precipitation index from Jan 30 to Feb 5.

- **Weekly Index of Soil Water Fraction (ISWF)**

With very little rain during the monitoring week, soil moisture conditions from Jan 30 to Feb 5, as displayed in [Figure 12](#), were severely and extremely dry in most areas of the LMB especially the middle and lower parts. The conditions were not preferable for crop growing. However, this does not mean the region were facing any serious agricultural drought as it is a normal phenomenon the LMB receives very little or no rain during dry season.

Note: The index of soil water fraction presents the current soil water fraction conditions compared with normal month; therefore, it normally shows extremely dry during dry season which is completely different from SPI that is standardized to its specific month of the years. However, this does not mean that the areas are threatened by agricultural drought as generally during transition period of wet and dry seasons and dry season only the irrigated areas are used for agricultural plantation.

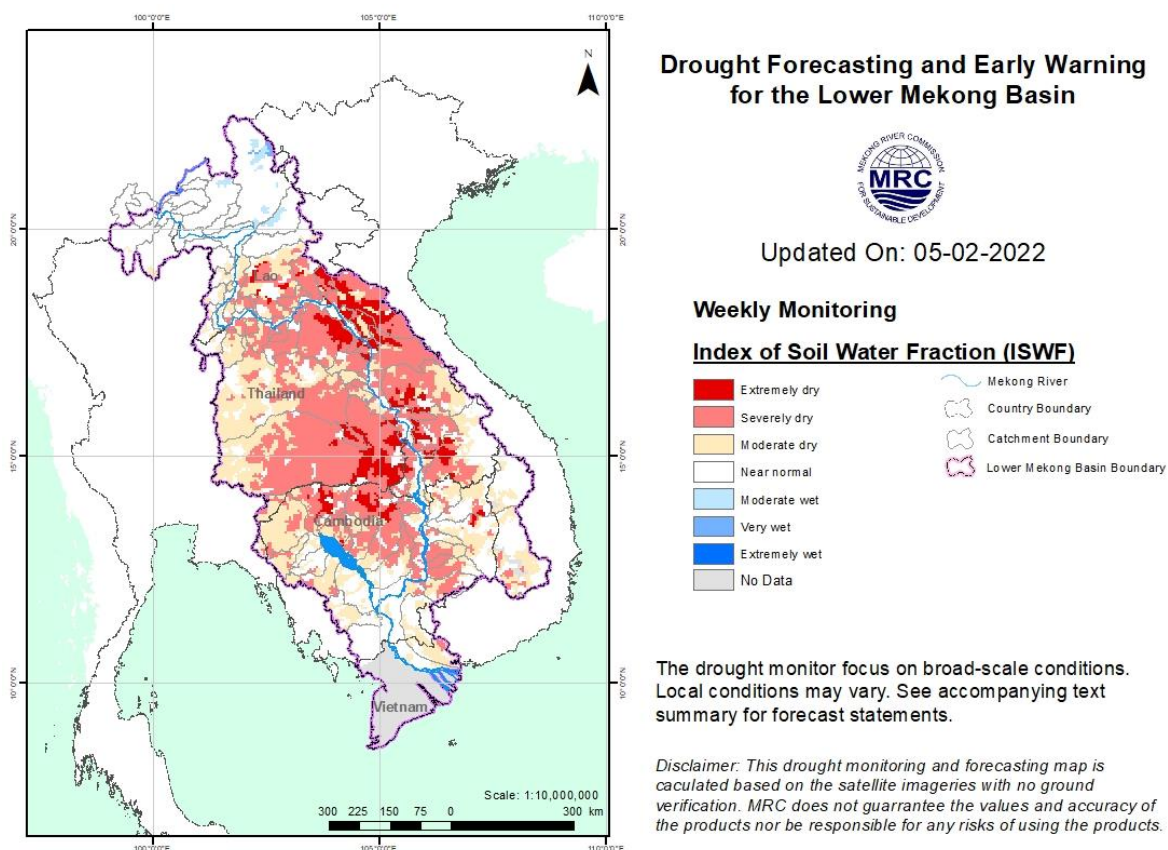


Figure 15: Weekly Index of Soil Water Fraction from Jan 30 to Feb 5.

- **Weekly Combined Drought Index (CDI)**

Similar to last week, the combined drought indicator, as displayed in [Figure 13](#), reveals that during 30 Jan-5 Feb 2022 the LMB was facing some moderate and severe droughts mainly in the northeast and southern parts of the LMB covering Xayaburi, Vientiane, Xaysomboun, Xiengkhuang, Borikhamxay, Khammuane, Nong Khai, Nakhon Phanom, Sakon Nakhon, and Savannakhet due to severely dry soil moistures as described above. The other areas, however,

were normal during the reporting week. It is considered normal during dry season from December to March each year.

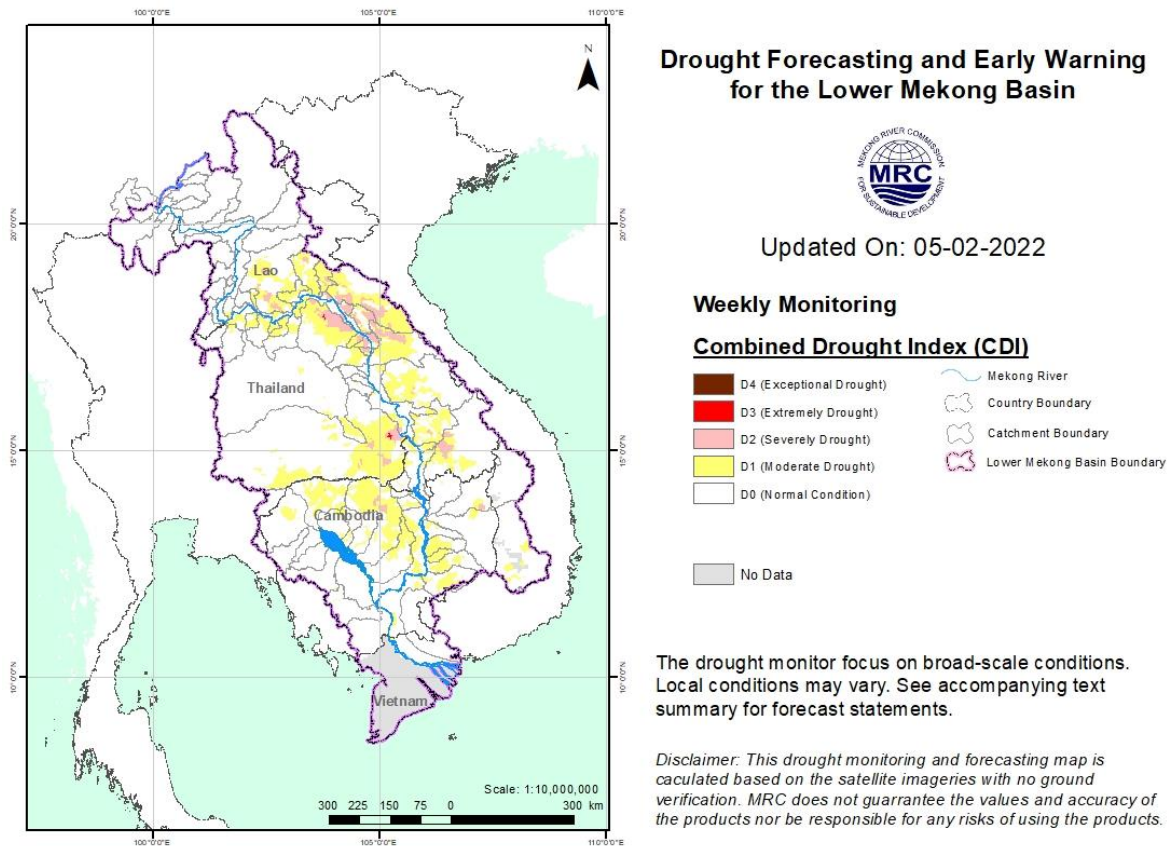


Figure 16: Weekly Combined Drought Index during Jan 30-Feb 5.

More information on Drought Forecasting and Early Warning (DFEW) as well as the explanation is available here: <http://droughtforecast.mrcmekong.org/templates/view/our-product>. DFEW provides not only weekly monitoring and forecasting information but also a three-month forecast of drought indicators with seasonal outlook which are updated every month based on international weather forecast models. Details on drought forecast are described in section 6.4 of this report.

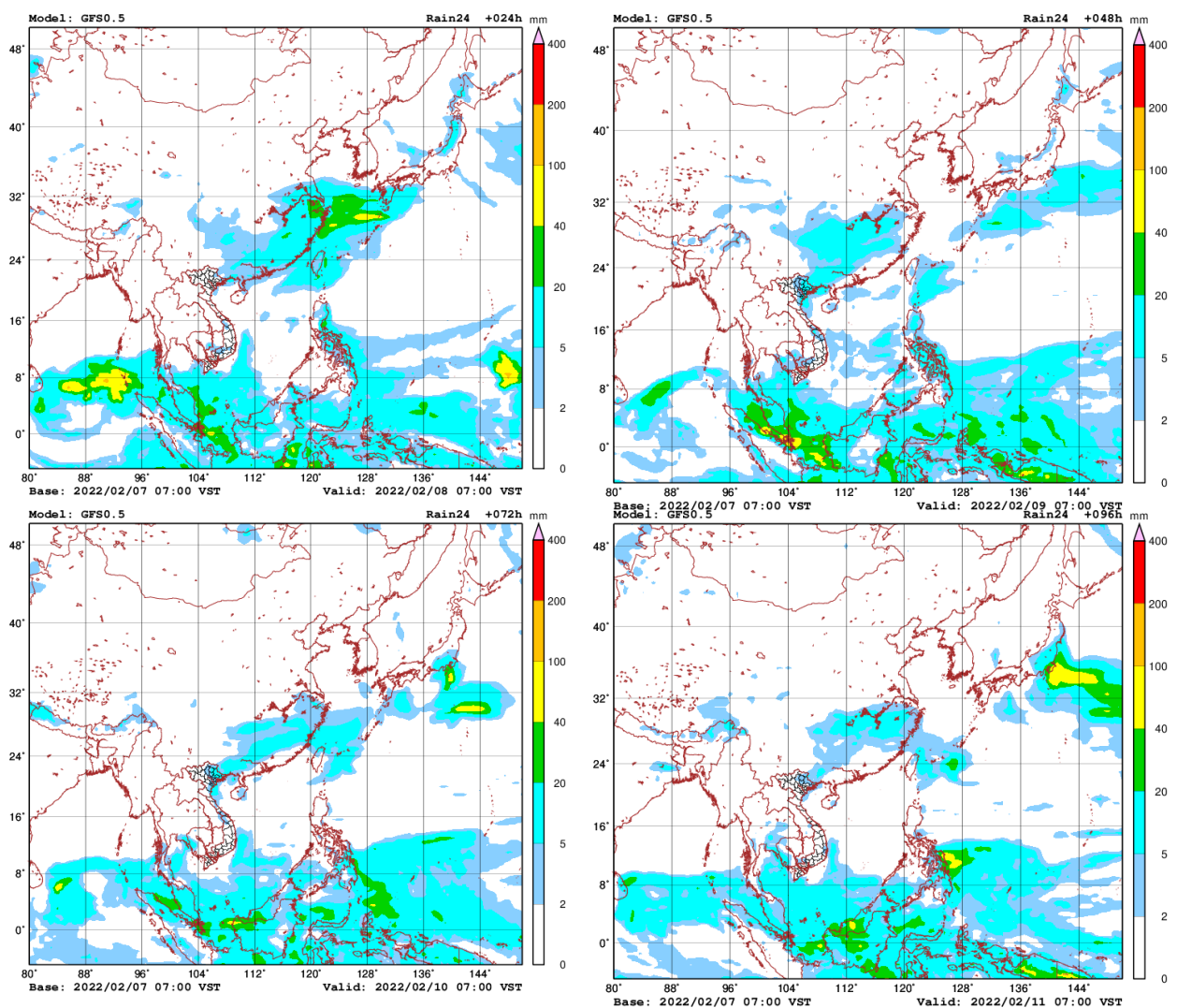
6 Weather and Water Level Forecast and Flash Flood Information

6.1 Weather and rainfall forecast

Based on the analysis of the synoptic meteorological information and result from the Global Forecast System (GFS) Model, in the coming week, two main factors might affect the LMB. They include (i) High pressure from China in the upper part and (ii) the prevailing weak Southwest Monsoon from the Gulf of Thailand to the lower part of the LMB.

During February 8-14, small rainfall (5-20 mm/24h) or no rain may occur in some areas of the LMB.

[Figure 14](#) shows accumulated rainfall forecast (24hrs) of the GFS model during February 8-14.



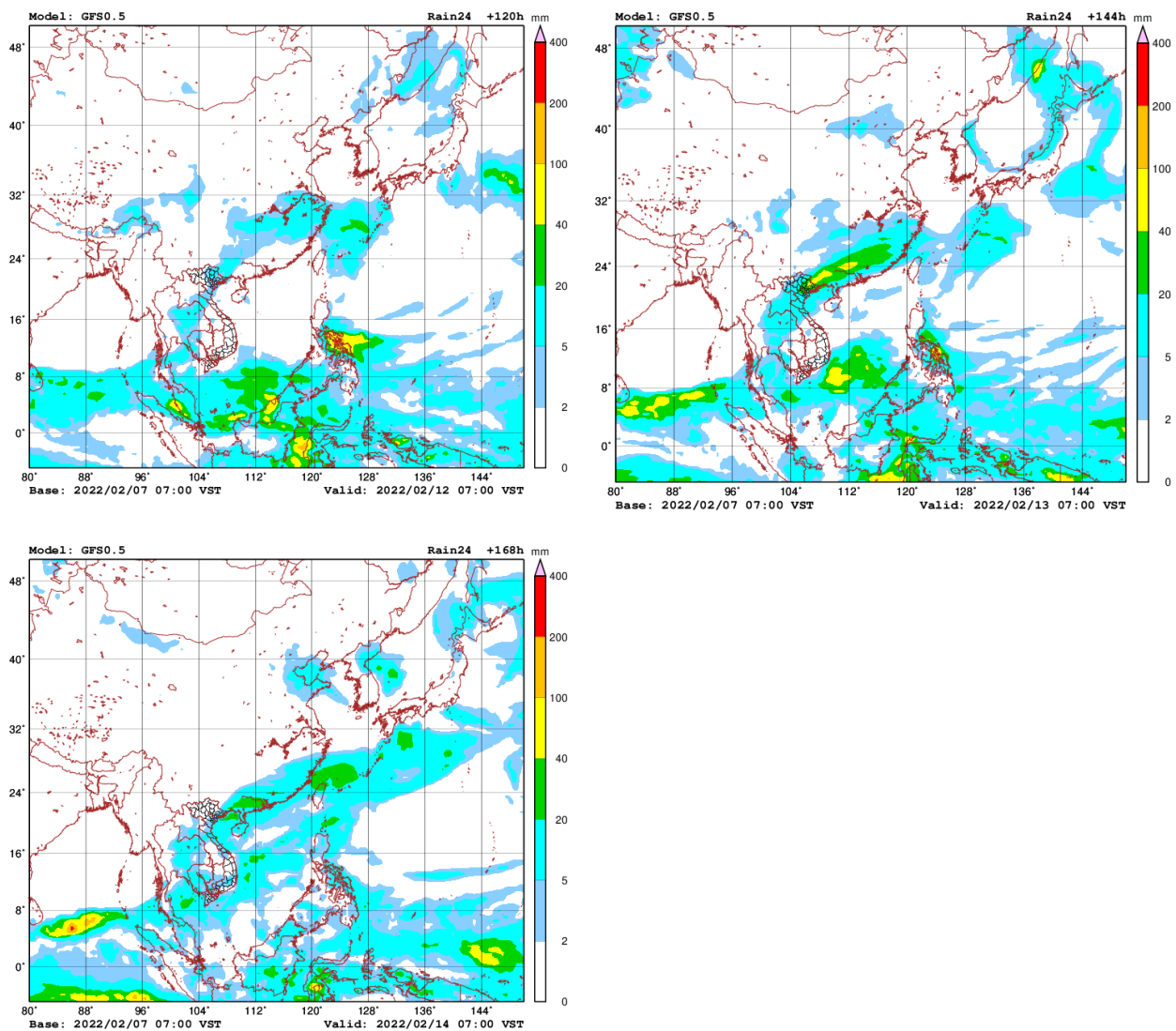


Figure 17: Accumulated rainfall forecast (24 hrs) of model GFS.

6.2 Water level forecast

Chiang Saen and Luang Prabang

Based on February 7's weekly river monitoring bulletin, the weekly forecast water level at Chiang Saen in Thailand is expected to increase from 1.76 m to 2.10 m in the next seven days. The trend of water level at these stations will continue staying higher than its LTA.

For Luang Prabang in Lao PDR, the water level is likely to increase from 8.72 m to 9.24 m in the next seven days. The current water level is close to its maximum value. Rainfall is forecasted in the area in the next seven days.

Chiang Khan, Vientiane-Nong Khai and Paksane

Water level at Chiang Khan station in Thailand is forecasted to be up about 0.41 m for the next seven days. From Vientiane in Lao PDR and Nong Khai in Thailand, WLS will increase of about

0.50 m in the next seven days. At Paksane in Lao PDR, water level will increase about 0.29 m due to less inflow from the upper catchments. Rainfall is forecasted in this area in the next seven days. The water levels at Nong Khai and Paksane will remain close to their LTA levels.

Nakhon Phanom to Pakse

Water levels from Nakhon Phanom to Mukdahan in Thailand will increase between 0.03 m and 0.15 m in the next seven days. The water levels from Khong Chiam in Thailand to Pakse in Lao PDR will decrease about 0.06 m. Water levels at these stations will stay lower than their LTA level. Next week no precipitation is forecasted in the area.

Stung Treng to Kompong Cham/Phnom Penh to Koh Khel/Neak Luong

From Stung Treng to Kratie on the Mekong River in Cambodia, the water levels will go down between 0.07 m and 0.27 m over the next seven days. W/Ls from Kompong Cham to downstream at Neak Luong will drop about 0.40 m. No rainfall is forecasted for the area between Stung Treng and Kompong Cham during next week.

The water levels of the Tonle Sap Lake at Prek Kdam and Phnom Penh Port as well as at Phnom Penh's Chaktomuk on the Bassac River will decrease about 0.34 m over the next seven days.

Water levels at most of the stations will continue to stay lower than their LTA value, particularly in the lower part of the region from the Bassac at Phnom Penh to Koh Khel as well as from Tonle Sap at Prek Kdam to Phnom Penh Port, including the Tonle Sap Lake. No rainfall is forecasted for the low-lying area of Cambodia next week.

Tidal stations at Tan Chau and Chau Doc

For Viet Nam's Tan Chau on the Mekong River and Chau Doc on the Bassac River, water levels will be moving up and down in between their Minimum and Maximum values following daily tidal effects from the sea.

[Table 3](#) shows the weekly River Monitoring Bulletin issued on February 7. Results of the started weekly river monitoring bulletin are also available at http://ffw.mrcmekong.org/bulletin_wet.php.

6.3 Flash Flood Information

Flash flood events are not likely to happen in the LMB. However, local heavy rain in a short period of time might still be possible with unexpected short flash floods. During the dry season if extreme weather occurs, the information on flash flood guidance for the next one, three, and six hours is updated at <http://ffw.mrcmekong.org/ffg.php>.

Further detailed information on Flash Flood Information Warning, as well as on its explanation, is available for download [here](#).

6.4 Drought forecast

There are several climate-prediction models with different scenarios on the upcoming months until March 2022. The MRC's DFEWS adopts an ensemble model called the North America Multi-Model Ensemble (NMME), which averages all scenarios.

The global scale of rainfall prediction is used to see how the rain distribution looks like for the coming months. [Figure 15](#) shows the ensemble mean of daily average precipitation (mm/day) each month from February to April 2022 produced by the NMME.

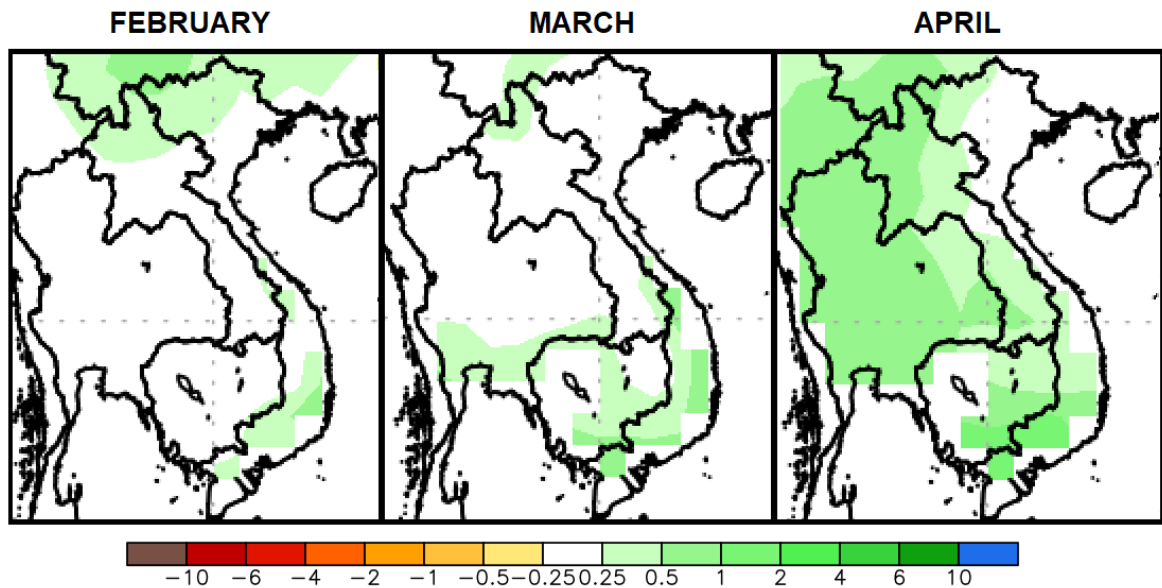


Figure 18. Daily average of monthly rainfall anomaly forecast from January to March 2022.

The ensemble prediction model based on the initial conditions in January 2022 reveals that the LMB is likely to receive average rainfall and under normal conditions in February and March while receive relatively high amount of rainfall in April 2022. Based on the rainfall forecasts, April is likely to be much wetter than normal year especially in the north and central parts of the LMB.

The 2021 dry season is relatively wetter than that of 2020 and the monsoon rain in the 2021 wet season has arrived earlier than it did in 2019 and 2020 especially over the upper and central parts of the LMB.

Table 2. Weekly River Monitoring Bulletin.



Mekong Bulletin

Mekong River Commission Secretariat (MRCS)

Regional Flood and Drought Management Centre (RFDMC)

P.O. Box 623 #576, National Road #2, Chak Angre Krom, Meanchey, Phnom Penh, Cambodia

Tel: (855-23) 425353, Fax: (855-23) 425363, Email: floodforecast@mrcmekong.org

Forecast period from: 08 February to 14 February 2022

Date: 07 February 2022

LOCATION	Country	Observed Rainfall (mm)	Zero gauge above M.S.L (m)	Min water level against zero gauge (m)	Observed W. level against zero gauge (m)		Forecasted Water Levels (m)							
					06-Feb	07-Feb	08-Feb	09-Feb	10-Feb	11-Feb	12-Feb	13-Feb	14-Feb	
Jinhong		10.0	-	-	535.23	535.23								
Chiang Saen		16.0	357.110	0.00	1.63	1.76	1.80	1.86	1.95	2.05	2.11	2.13	2.10	
Luang Prabang		0.0	267.195	2.53	8.58	8.72	8.83	8.97	9.00	9.05	9.12	9.19	9.24	
Chiang Khan		0.0	194.118	1.91	3.76	3.77	3.85	3.95	4.05	4.07	4.10	4.15	4.18	
Vientiane		0.0	158.040	-0.28	1.70	1.73	1.78	1.87	2.00	2.11	2.13	2.18	2.24	
Nongkhai		0.0	153.648	0.33	1.00	1.03	1.08	1.18	1.31	1.42	1.44	1.49	1.54	
Paksane		0.0	142.125	0.10	1.87	1.86	1.88	1.91	1.96	2.05	2.10	2.13	2.15	
Nakhon Phanom		0.0	130.961	0.18	0.97	0.89	0.85	0.84	0.86	0.90	0.96	0.99	1.02	
Thakhek		0.0	129.629	1.38	2.32	2.23	2.18	2.16	2.19	2.23	2.30	2.33	2.37	
Mukdahan		0.0	124.219	0.72	1.63	1.56	1.48	1.44	1.42	1.45	1.48	1.53	1.56	
Savannakhet		0.0	125.410	-0.65	0.18	0.13	0.10	0.10	0.11	0.13	0.15	0.17	0.19	
Khong Chiam		0.0	89.030	1.02	2.06	2.02	1.96	1.90	1.85	1.82	1.86	1.90	1.96	
Pakse		0.0	86.490	0.03	1.12	1.10	1.06	1.02	1.00	0.98	1.01	1.04	1.08	
Stung Treng		nr	36.790	0.32	2.76	2.72	2.7	2.67	2.65	2.63	2.61	2.63	2.65	
Kratie		nr	-1.080	3.06	7.52	7.43	7.34	7.28	7.23	7.20	7.18	7.16	7.14	
Kompong Cham		nr	-0.930	0.65	3.20	3.07	2.95	2.83	2.76	2.70	2.64	2.60	2.57	
Phnom Penh (Bassac)		nr	-1.020	1.58	2.56	2.53	2.50	2.46	2.43	2.40	2.37	2.35	2.33	
Phnom Penh Port		-	0.000	0.14	1.58	1.55	1.51	1.47	1.43	1.40	1.37	1.35	1.32	
Koh Khel		nr	-1.000	1.52	2.72	2.62	2.56	2.52	2.50	2.45	2.48	2.52	2.57	
Neak Luong		nr	-0.330	0.81	1.92	1.82	1.77	1.73	1.70	1.70	1.67	1.65	1.63	
Prek Kdam		nr	0.080	0.58	1.68	1.64	1.58	1.52	1.47	1.42	1.38	1.34	1.30	
Tan Chau		0.0	0.000	-0.37	0.61	0.43	0.32	0.29	0.29	0.35	0.45	0.64	0.85	
Chau Doc		nr	0.000	-0.60	0.71	0.54	0.42	0.37	0.35	0.39	0.49	0.67	0.86	

REMARKS:

-: not available.
 *: reference stations without forecast.
 nr: no rain.

River Flood Forecaster

KHEM Sothea

NOTE: Discharge at Luang Prabang may be influenced by hydropower operations (at both upstream and downstream).
 For more info, please refer to this link:
<http://www.mrcmekong.org/>; http://ffw.mrcmekong.org/bulletin_wet.php; <http://ffw.mrcmekong.org/reportflood.php>

7 Summary and Possible Implications

7.1 Rainfall and its forecast

This week, rainfall was observed in the Mekong region, varied from 1.00 mm to 19.00 mm. Compared with last week's amount, the rainfall this week was considered higher in the LMB.

Based on the forecasted rainfall from satellite using GFS data, rainfall is likely to take place in the areas from the lower part of Cambodia, the 3S area and Mekong Delta of Viet Nam during February 8-14, varying from 0.02 mm to 40 mm. This indicates that the warm weather has already started over the LMB.

7.2 Water level and its forecast

The MRC's observed water level at Jinghong showed a stable level during the weekly monitoring period from 1 to 7 Feb 2022 (recorded on 7:00 am) and stayed about 0.36 m lower than its two-year average (2020-2021) value. The outflow at Jinghong station was about 807.00 m³/s from 1 to 7 February 2022.

Water levels in the lower part of the monitoring locations in the LMB during this reporting week were increasing from Chiang Sean to Luang Prabang, while from Chaing Khan to Paksane they were decreasing. Water levels from Nakhon Phanom in Thailand to Pakse in Lao PDR also decreased. Water levels at these stations were lower than their LTA value, except WL at Savannakhet which was down close to its minimum level, considered critical. In Cambodia, water levels at Stung Treng and Kratie were higher than their LTA value, while at Kompong Cham water levels dropped lower than their LTA level. Water levels at Neak Luong, Bassac at Phnom Penh, and Prek Kdam in Cambodia were also lower than their LTA level. The low level was due to low inflows from upstream and less rainfall in the region from 1 to 7 February 2022. Generally, this week's water levels were relatively lower than those of last week from the upper and the lower part of the LMB.

Water levels at Chiang Saen, Luang Prabang, Chiang Khan, Vientiane, Khong Chiam and Pakse, Stung Treng and Kratie stations were higher than their LTA level, while those at other stations were lower than their LTA level.

The flow volume of the Tonle Sap Lake was lower than its LTA. From next week, the flow is expected to continue decreasing due to less rainfall forecasted in the inflow catchments of the Tonle Sap Lake.

From Stung Treng to Kratie water levels will go up, but from Kompong Cham to Chaktomuk in Phnom Penh, the water levels will go down. The water levels – at Neak Luong on the Mekong River, from Prek Kdam to Phnom Penh Port on the Tonle Sap, and Koh Khel on the Bassac – are forecasted to continue staying below their LTA level.

The situation in Tan Chau on the Mekong River and Chau Doc on the Bassac River is expected to remain fluctuating. The current fluctuation of water level is in between their Minimum and Maximum levels, which considered very critical.

Since the fourth week of October 2021, water levels across most monitoring stations in the LMB have significantly dropped to the level lower than their LTA (from upper to lower stretches within the LMB). For a more complete preliminary analysis of the hydrological conditions in the LMB over July–December 2020, November 2020 to May 2021 and June to October 2021 see this [Situation Report](#).

The contribution to the Mekong River's flow from the UMB in China (Yunnan component) is about 16% by the time the river discharges through the Mekong Delta into the Sea. By far the major contribution comes from the two major 'left-bank' (Eastern) tributaries between Vientiane – Nakhon Phanom and Pakse – Stung Treng, which together contribute more than 40% of the flows.

7.3 Flash flood and its trends

With the predicted of rainfall for the coming week as mentioned earlier in [section 6.1](#), major flash floods are not likely to happen in the LMB.

7.4 Drought condition and its forecast

Drought conditions of the LMB from 30 January to 05 February 2022 were normal all over the LMB except some moderate drought in the northeast and southern parts due to severely dry soil moistures during the beginning of dry season. The region showed no significant threat except some moderate and severe dry soil moistures which are normal during dry season.

For the upcoming three-month forecast, the LMB is likely to receive average rainfall and under normal conditions in February and March while receive relatively high amount of rain in April 2022. Based on the rainfall forecasts, April is likely to be much wetter than normal year especially in the north and central parts of the LMB.

Annex A: Tables for weekly updated water levels and rainfall at the Key Stations

Table A1: Weekly observed water levels

2021	Jinghong	Chiang Saen	Luang Prabang	Chiang Khan	Vientiane	Nongkhai	Paksane	Nakhon Phanom	Mukdahan	Pakse	Stung Treng	Kratie	Kompong Cham	Phnom Penh (Bassac)	Koh Khei	Neak Luong	Prek Kdam	Tan Chau	Chau Doc
01-02-2022	535.23	1.73	8.64	3.81	2.04	1.38	2.35	1.51	1.98	1.42	2.80	7.42	3.12	2.39	2.32	2.22	1.51	1.52	1.72
02-02-2022	535.24	1.70	8.68	3.72	1.84	1.24	2.22	1.39	1.92	1.42	2.82	7.52	3.16	2.44	2.50	2.04	1.54	1.59	1.78
03-02-2022	535.25	1.68	8.72	3.71	1.68	1.06	2.12	1.32	1.87	1.42	2.84	7.55	3.20	2.47	2.50	1.84	1.62	1.45	1.61
04-02-2022	535.22	1.64	8.77	3.69	1.64	0.99	2.00	1.18	1.78	1.29	2.82	7.59	3.18	2.55	2.59	1.84	1.64	1.24	1.37
05-02-2022	535.24	1.66	8.79	3.70	1.68	0.86	1.91	1.05	1.72	1.20	2.80	7.57	3.22	2.53	2.60	1.90	1.67	0.94	1.02
06-02-2022	535.23	1.63	8.58	3.76	1.70	1.00	1.87	0.97	1.63	1.12	2.76	7.52	3.20	2.56	2.72	1.92	1.68	0.61	0.71
07-02-2022	535.23	1.76	8.72	3.77	1.73	1.03	1.86	0.89	1.56	1.10	2.72	7.43	3.07	2.53	2.62	1.82	1.64	0.43	0.54

Table A2: Weekly observed rainfall

2021	Jinghong	Chiang Saen	Luang Prabang	Chiang Khan	Vientiane	Nongkhai	Paksane	Nakhon Phanom	Mukdahan	Pakse	Stung Treng	Kratie	Kompong Cham	Phnom Penh (Bassac)	Koh Khei	Neak Luong	Prek Kdam	Tan Chau	Chau Doc
01-02-2022	0	0	0	0	0	0	0	0.9	0	0	0	0	0	0	0	0	0	0	0
02-02-2022	0	0	0	0	0	0	0	0	0	0	0	0	0	0	0	0	0	0	0
03-02-2022	0	0	0	0	0	0	0	0	16.5	0	0	0	0	0	0	0	0	0	0
04-02-2022	0	0	0	0	0	0	0.3	0	0	0.5	0	0	0	0	0	0	0	0	0
05-02-2022	0	0	0	0	0	0	0	0	0	0	0	0	2	0	5.5	0	0	0	0
06-02-2022	7	3	3	5	0	0	0.2	0	0	0	0	0	0	0	0	0	0	0	0
07-02-2022	10	16	0	0	0	0	0	0	0	0	1	0	0	0	0	0	0	0	0



Mekong River Commission Secretariat

P. O. Box 6101, 184 Fa Ngoum Road, Unit 18 Ban Sithane Neua, Sikhottabong District, Vientiane 01000, Lao PDR
Tel: +856 21 263 263. Fax: +856 21 263 264 www.mrcmekong.org

© Mekong River Commission 2020